

**MPLLED**



## Outdoor Fixed Series LED display

MP LED brings you stable and satisfied outdoor LED Displays.

Shenzhen MP LED Technology CO., LTD



## Superior Quality Air Plug-in Connector

We provide superior quality air plug-in connector to ensure real IP65 level and stability of power/signal transmission. Our standard is air plug-in connector, this allow a easy installation and disassembly.

## High Brightness, Low Luminous Decay

With more than 6500CD/m<sup>2</sup> high brightness, DIP products widely use for outdoor advertisement and outdoor video wall. Especially the lower decay of luminance can well prolong the lifespan of leds. MPLED control the decay within 5% every year with reliable led chip(Inferior led chip lead to 10% decay every year)



## Excellent Waterproof Level IP65

DIP outdoor products ensure IP65 for front and back with sealed design. The cabinet strong enough to protect all accessories under bad weather, like heavy rain, heavy snow or strong wind.

## High Quality Image

DIP with Epistar led chip, high refresh rate IC, stable power supply and reliable Nova control system. All this help to optimize image of outdoor large led display. MPLED also provide energy-saving large led display for some serious limitation countries, can save 30% electric power.

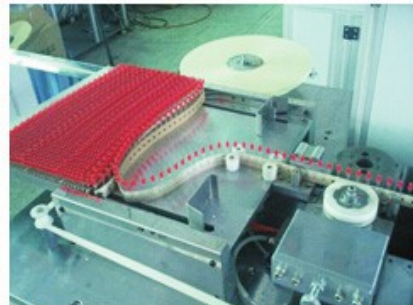




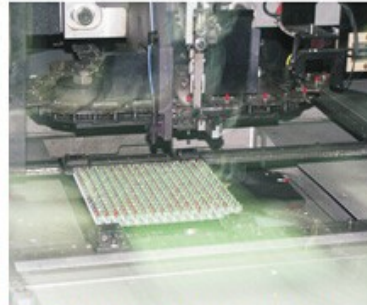
## MPLED Technology-outdoor led screen productive process



Mixing leds to ensure the same lumens for every led lamp



led knitter machine to make leds in order



Automatic DIP machine, fix leds to PCB



Wave-soldering and reflow-soldering to fix IC onto PCB board



Check whether the leds well soldering or not. Check piece by piece.



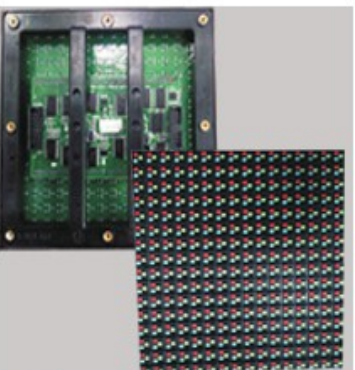
P10 module under glue potting to ensure waterproof level for every module



Module test, if RGB is ok, will begin the next step



Fix mask and external parts to module



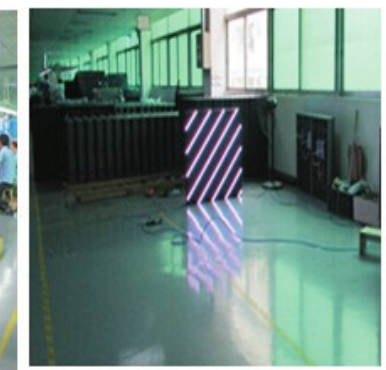
Finished module with waterproof silicone circle



Every module should be tested for 48 hours before assembly



Assembly. The modules, power supply, power cable, receiving card well



Cabinet test one by one



Assemble cabinet to a large/whole screen



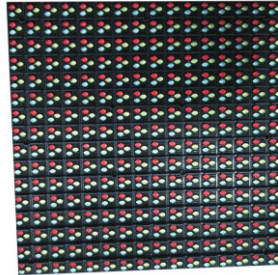
Configure led screen with software



Led screen should test for 72 hours without stop before package and delivery



After package by plywood case/flight case, we prepare for delivery



| Item                                | Outdoor Full color Fixed Installation  |               |               |               |               |
|-------------------------------------|--|---------------|---------------|---------------|---------------|
| Pixel Pitch (mm)                    | 8mm                                    | 8mm           | 10mm          | 10mm          | 16mm          |
| Pixel density(dots/m <sup>2</sup> ) | 15625                                  | 15625         | 10000         | 10000         | 3906          |
| LED Type                            | DIP346                                 | SMD3535       | DIP346        | SMD3535       | DIP346        |
| Viewing angle                       | H:120°,V:100°                          | H:140°,V:140° | H:120°,V:100° | H:140°,V:140° | H:120°,V:100° |
| Brightness(CD/m <sup>2</sup> )      | ≥6500                                  | ≥5500         | ≥6500         | ≥5500         | ≥6500         |
| Drive Method                        | 1/4                                    | 1/4           | 1/4           | 1/4           | static scan   |
| Color Depth(bits)                   | ≥14bits                                | ≥14bits       | ≥14bits       | ≥14bits       | ≥14bits       |
| Refresh Rate(Hz)                    | ≥1200                                  | ≥1200         | ≥1200         | ≥1200         | ≥1200         |
| Module Size(mm)                     | 256x128                                | 256x128       | 160x160       | 320x160       | 256x256       |
| Cabinet Size(mm)                    | 1024×1024×120                          | 1024×1024×120 | 960×960×120   | 960×960×120   | 1024×1024×120 |
| Cabinet Material                    | Steel                                  | Steel         | Steel         | Steel         | Steel         |
| Cabinet weight(kg/panel)            | 61                                     | 50            | 53            | 45            | 55            |
| Voltage Input                       | 110V~220V±10%                          | 110V~220V±10% | 110V~220V±10% | 110V~220V±10% | 110V~220V±10% |
| Aver.power(W/m)                     | 330                                    | 330           | 240           | 240           | 330           |
| Max.power(W/m)                      | 1100                                   | 1100          | 800           | 800           | 1100          |
| IP Grade                            | IP 65                                  | IP 65         | IP 65         | IP 65         | IP 65         |
| Operating temperature/humidity      | temperature:-20℃~50℃ humidity:10~90%RH |               |               |               |               |
| Storage temperature/humidity        | temperature:-40℃~60℃ humidity:10~90%RH |               |               |               |               |
| Lifetime(h)                         | ≥100000                                |               |               |               |               |
| Compliant Standard                  | CCC、CE、Rosh                            |               |               |               |               |

## APPLICATION

- Fixed strong design cabinet to resist bad weather.
- P8 to P16 available, DIP and SMD solution are on hot sale.
- Lower cost with higher return.
- Outdoor video wall, Church, Concert, Stage, Fashion show, Commercial promotion, Theme park, Shopping mall, Hotel, Airport Railway station, Bus station, etc.